



J. M. Engineering Co.

A collage of images related to engineering and technology, including a blue and white airplane, various colored heat shrink sleeves, rolls of yellow and green sleeves, a circuit board, and wind turbines. A yellow square is positioned behind the 'PRODUCTS' text.

# PRODUCTS

A light gray world map is visible in the background of the central section.

## Heat Shrink Sleeves

### Dual Wall Heat Shrink Sleeves



Visit Us

Manhar Bldg., 3rd Floor, 177,  
Lohar Chawl, Mumbai –  
400002, Maharashtra (INDIA)



Email Us

[info@jmenggco.in](mailto:info@jmenggco.in)



Call Us

T: +91-22-2206 1671  
F: +91-22-2209 0291

# SBRS-(3X)GLW

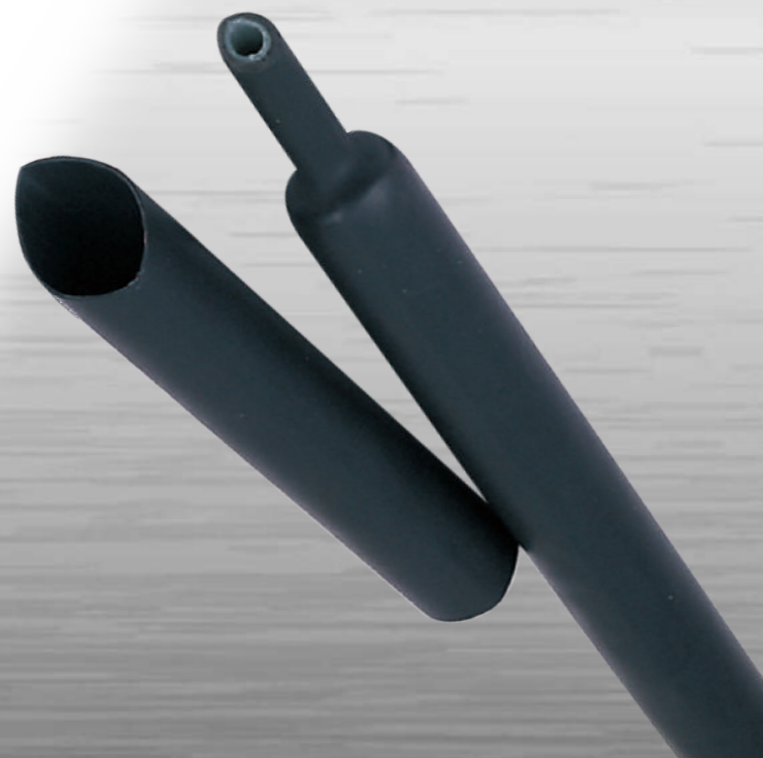
## Flexible, Thick Adhesive-Lined Dual Wall Heat-Shrink Tubing

Flexible, Thick Adhesive-Lined Dual Wall Heat-Shrink Tubing is manufactured by co-extrusion of polyolefin and hot-melt adhesive. Designed to provide both insulation and sealing for protected articles, Used to protect bundles wires and metal tubes against water and moisture.



### Features

- Low longitudinal shrinkage
- Thick adhesive liner bonding to a wide variety of plastics, rubber and metals forms an effective barrier against fluids and moisture,
- Flexible
- Continuous operating temperature:-45 - 125
- Min shrink temperature:110
- Shrink ratio: 3:1



### Dimensions

Size		Expanded	After Recovery			Standard Package
Inch	mm	Internal Diameter mm	Internal Diameter mm	Total Wall Thickness mm	Adhesive Thickness mm	Spool Length M/spool
1/8	3.2	3.2	1.0	0.90±0.30	0.45±0.20	200
3/16	4.8	4.8	1.6	1.20±0.30	0.55±0.20	100
1/4	6.4	6.4	2.2	1.25±0.30	0.55±0.20	100
5/16	7.9	7.9	2.7	1.35±0.30	0.65±0.20	100
3/8	9.5	9.5	3.2	1.35±0.30	0.65±0.20	50
1/2	12.7	12.7	4.2	1.55±0.40	0.75±0.20	1.22 OR 25M/Roll
5/8	15.0	15.0	5.2	1.65±0.40	0.75±0.20	1.22 OR 25M/Roll
3/4	19.1	19.1	6.3	1.90±0.40	0.85±0.20	1.22 OR 25M/Roll
1	25.4	25.4	8.5	2.00±0.40	0.90±0.20	1.22 OR 25M/Roll
5/4	30.0	30.0	10.2	2.05±0.40	0.90±0.20	1.22 OR 25M/Roll
1-1/2	38.1	38.1	13.5	2.35±0.40	1.05±0.20	1.22 OR 25M/Roll

### Technical Data

Property	Test Method	Standard	Typical Performance
Tensile Strength(MPa)	ASTM D2671	10.4	11
Elongation(%)	ASTM D2671	300	450
Tensile Strength after aging (MPa)	UI224 158 X168hr	7.3	8.5
Elongation after aging(%)	UI224 158 X168hr	200	350
Dielectric strength(kV/mm)	IEC 60243	15	17.5
Volume resistivity( .cm)	IEC 60093	1X10 <sup>14</sup>	2.5X10 <sup>14</sup>

### Adhesive

Property	Test Method	Standard
Water Absorption	ASTM D570	0.2%
Sofening Point( )	ASTM E28	90± 5
Strength of pearing(PE)	ASTM D 1000	120N/25mm
Strength of pearing(AL)	ASTM D 1000	80N/25mm